



How Do European Higher Education Institutions Recognise Student Engagement? European STEP Project Survey Report



ANNEX 2 – European STEP Survey Results

This project has been funded with support from the European Commission. This publication reflects the views only of the author, and the Commission cannot be held responsible for any use which may be made of the information contained therein.

Following charts present the distribution of responses in the survey. Charts present percentages and number of responses of the total number of complete answers – 120. The order of the charts follows the structure of questions in the survey.

Institutional and personal information

Figure 1. Number of responses by countries (N=120)

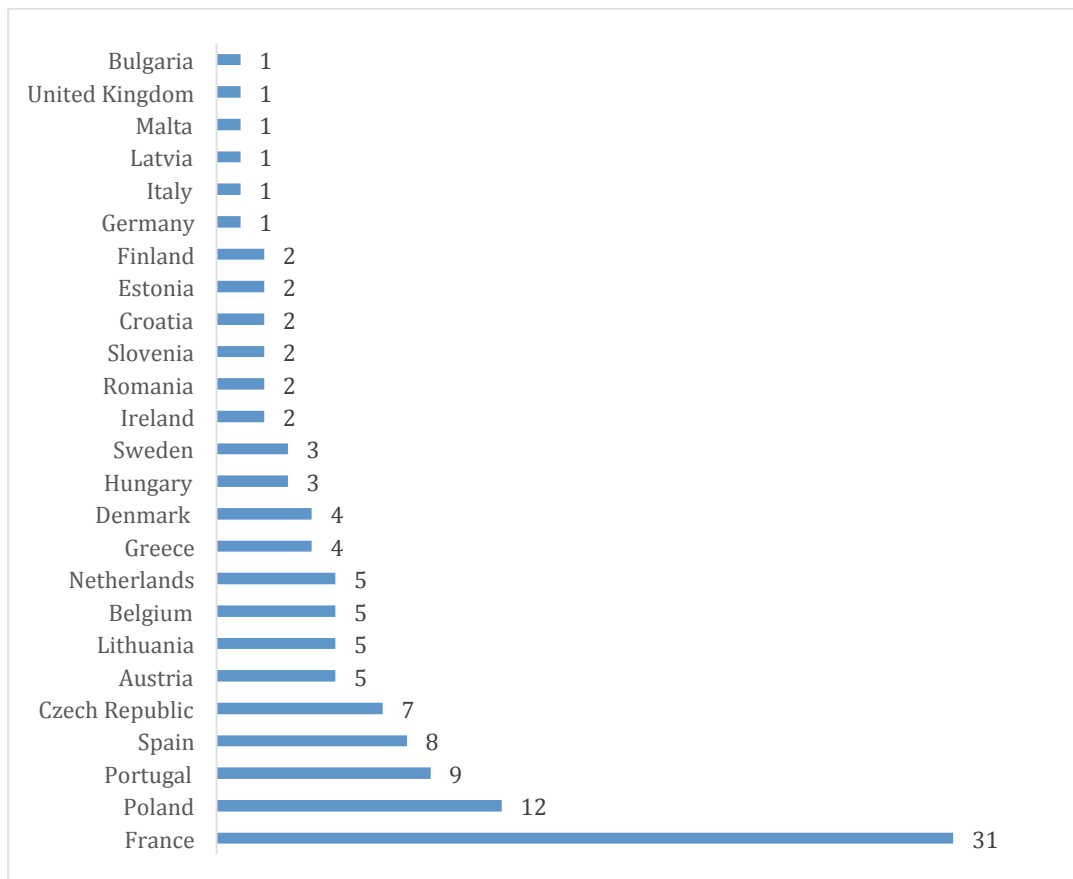


Figure 2. Distribution of responses by type of educational institution, % (N=120)

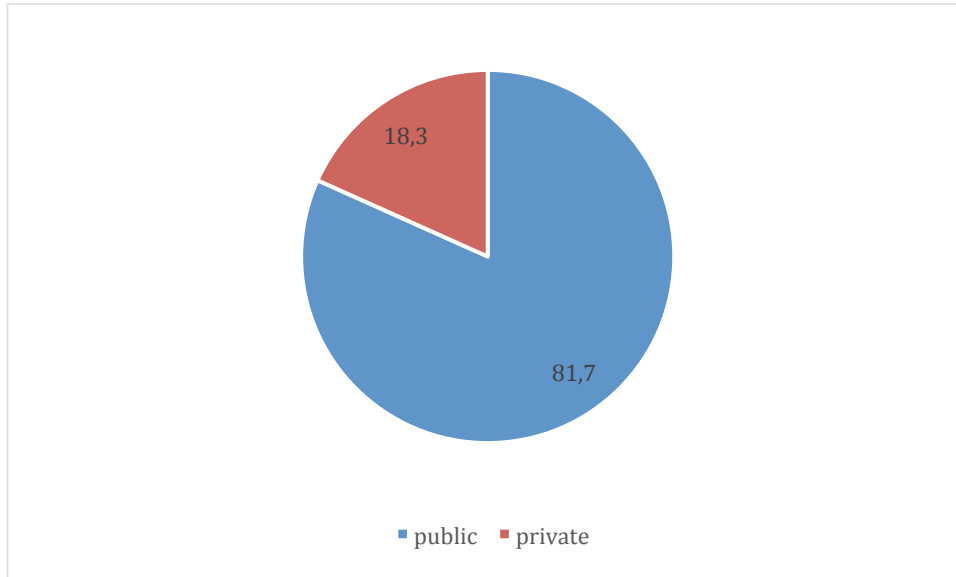


Figure 3. Number of responses by type of educational institution in different countries (N=120)

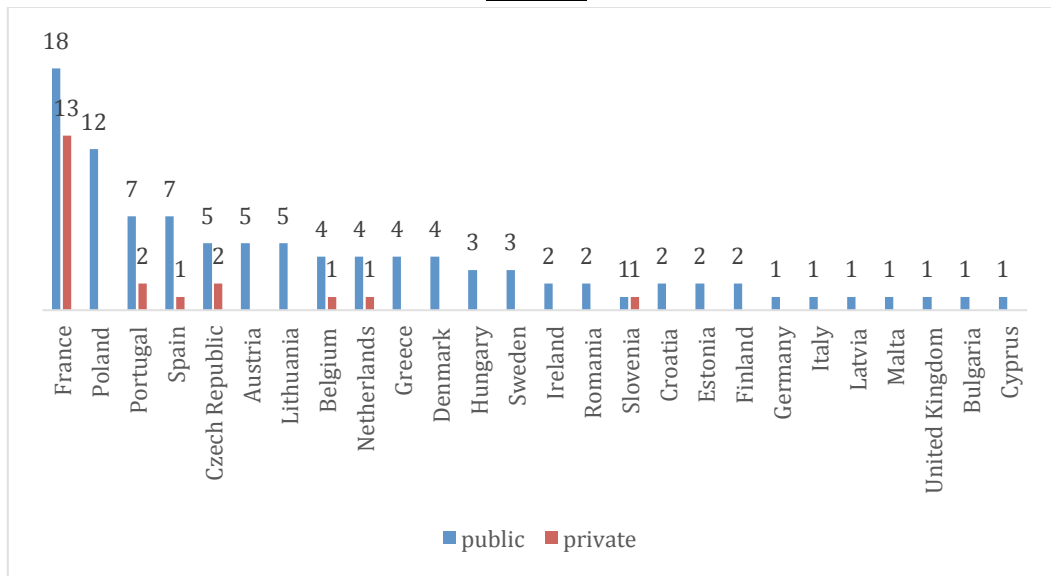


Figure 4. Distribution of responses by the number of students, % (N=120)

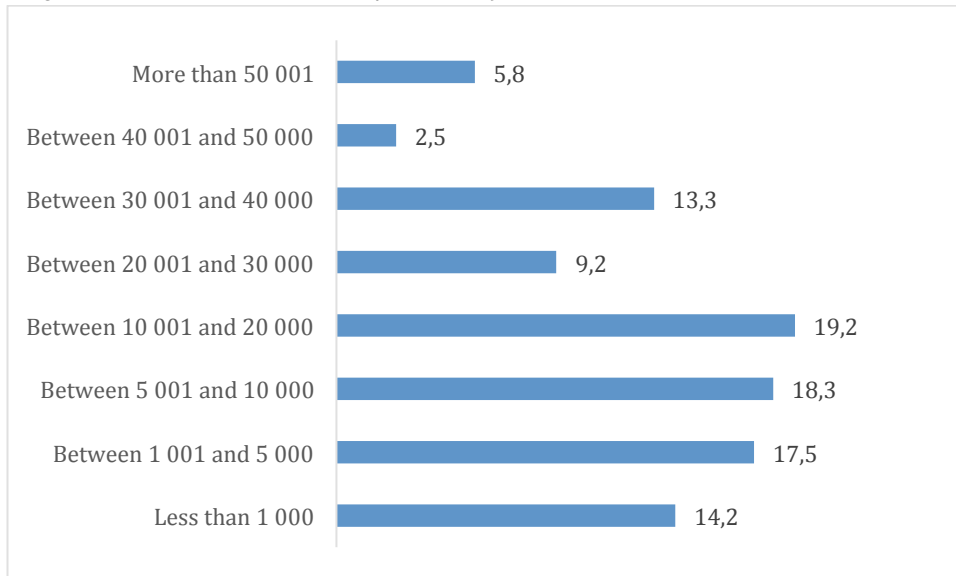


Figure 5. Distribution of responses by period of working in higher educational institution (N=120)

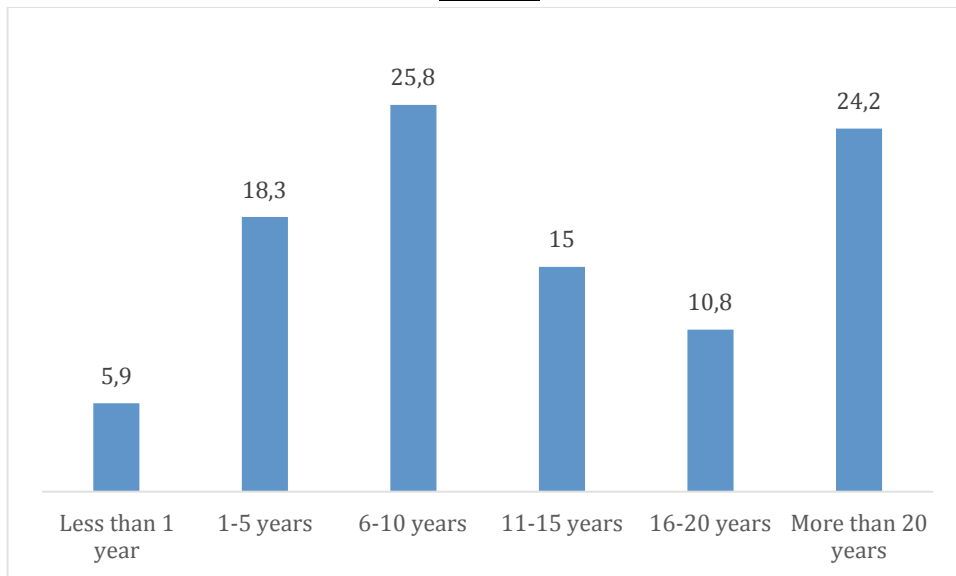


Figure 6. Distribution of responses by gender, % [N=120]

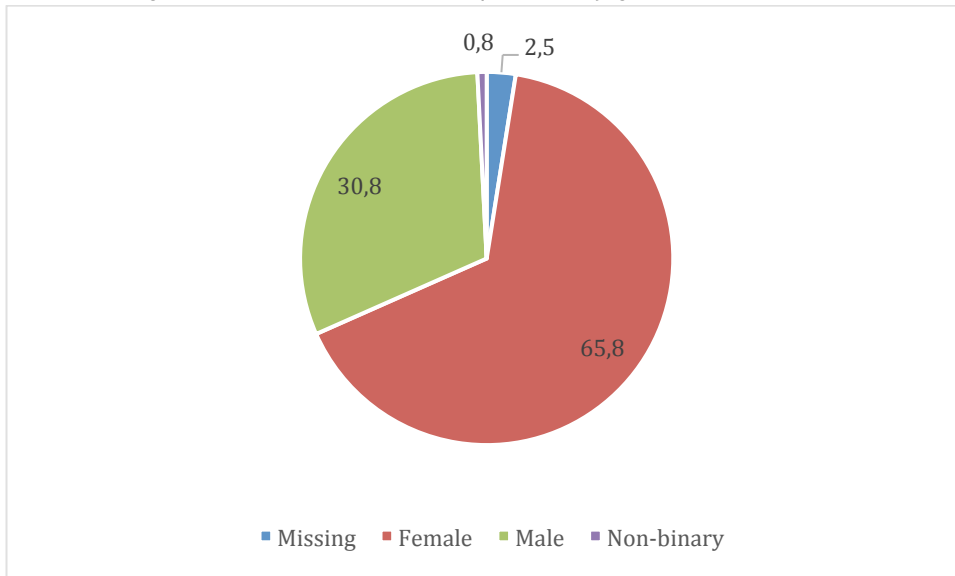
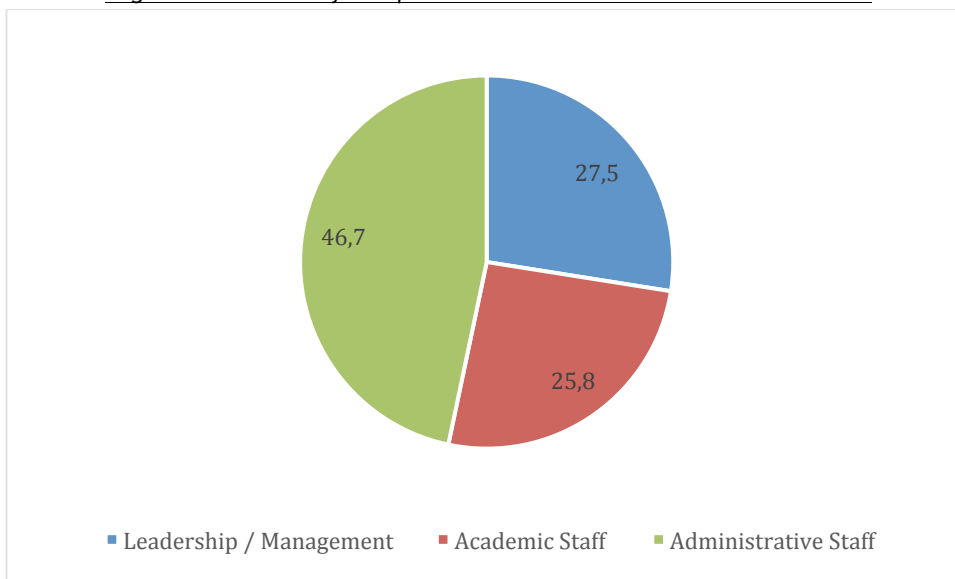


Figure 7. What is your position in the institution? % [N=120]



Institutional policy on student engagement

Figure 8. Is student engagement part of your institution's strategy? (Multiple choice) %

(N=120)



Figure 9. Does your institution have a policy on student engagement? % (N=120)

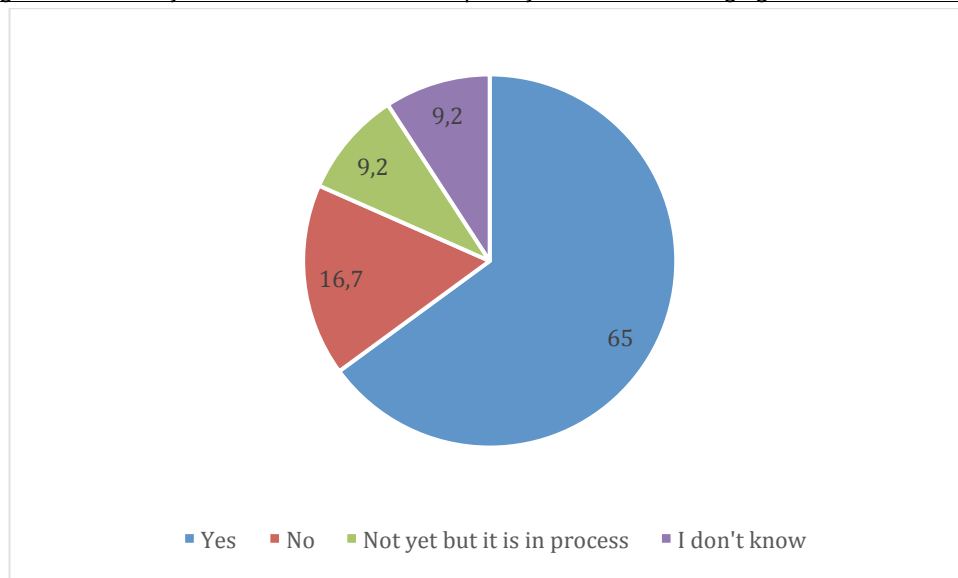


Figure 10. For your institution, what kind of activities are considered student engagement?
(multiple choice) % (N=120)

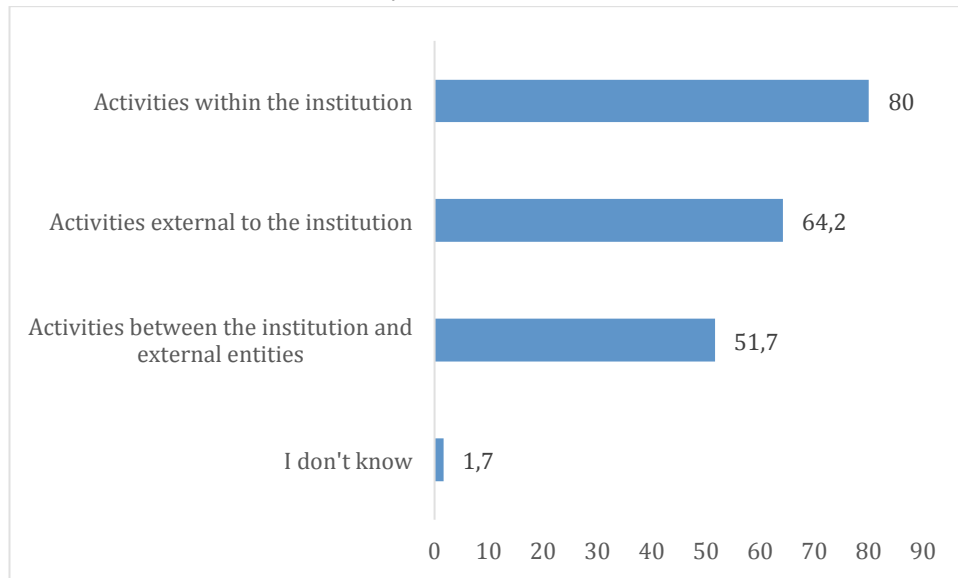


Figure 11. Select the activities within the institution considered as student engagement
(multiple choice), % (N=120)

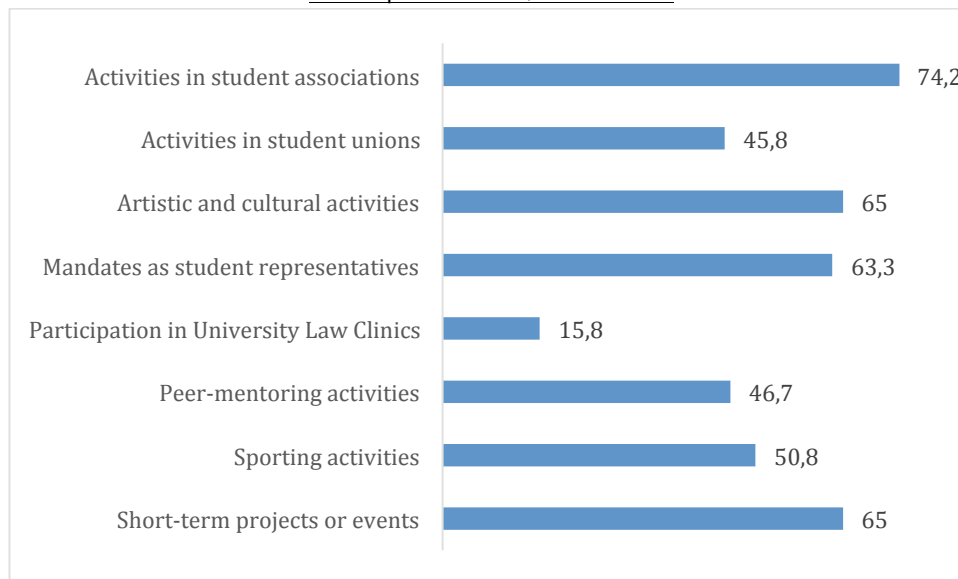


Figure 12. Select the activities external to the institution considered as student engagement
(multiple choice), % (N=120)

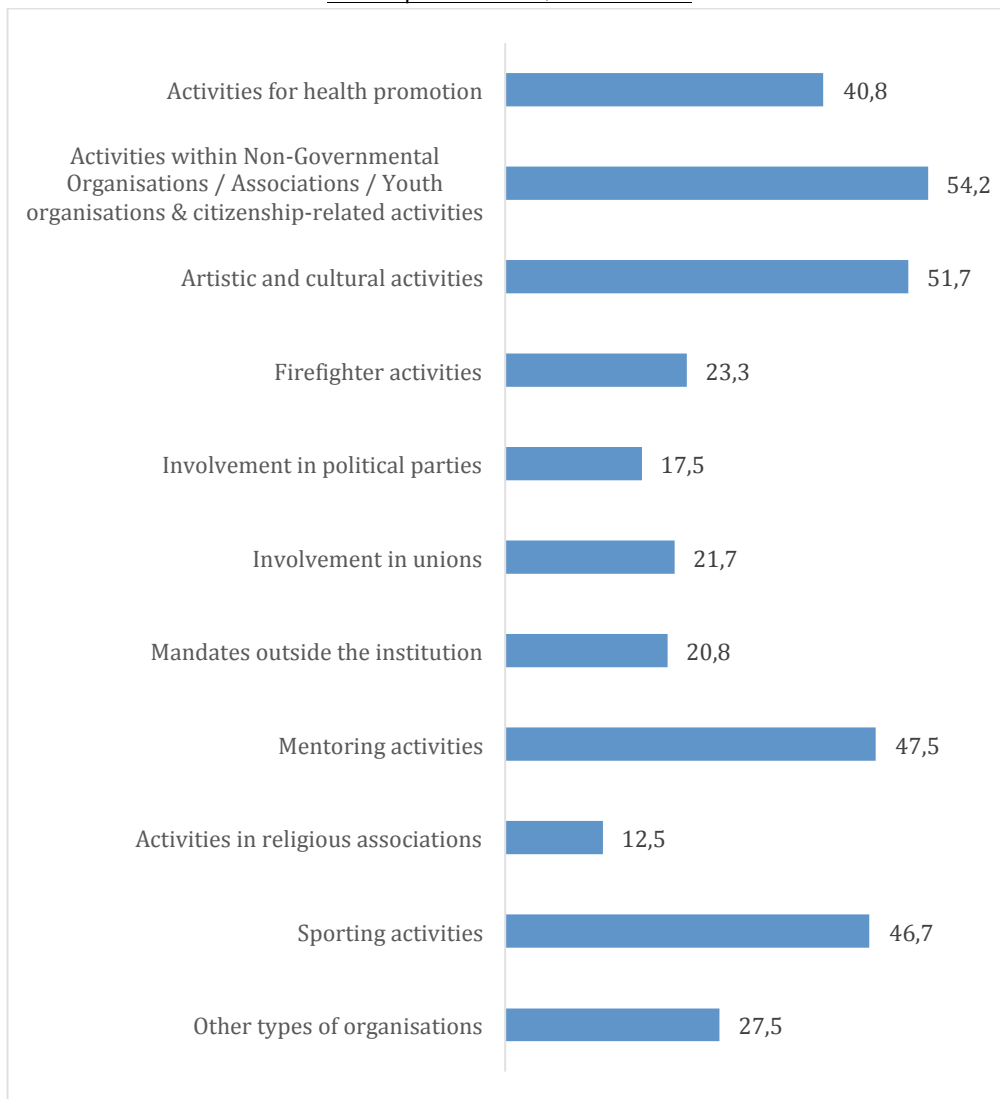


Figure 13. Does your institution have a structure / unit / department dedicated to student engagement? % (N=120)

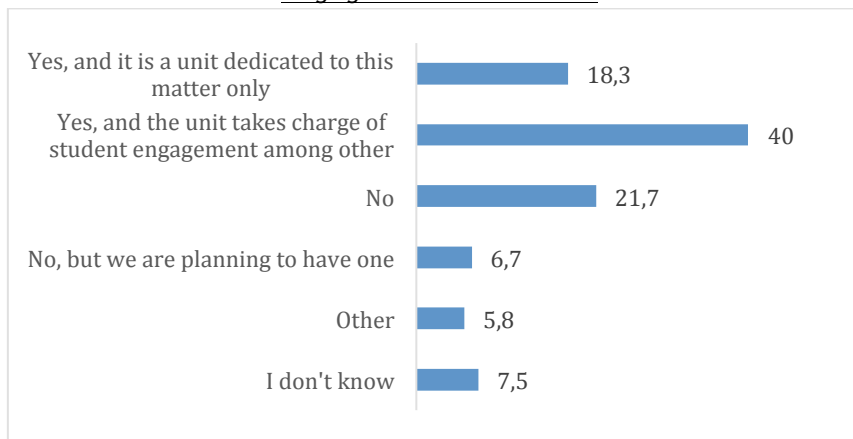


Figure 14. How has the importance of student engagement changed over the past six years for your institution? % (N=120)

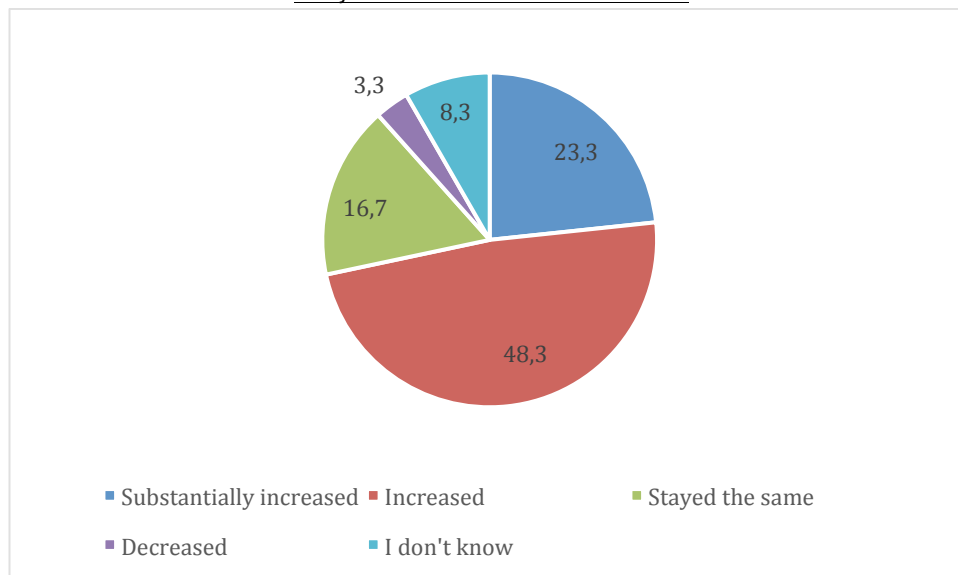


Figure 15. Does your institution collect data about student engagement? % (N=120)

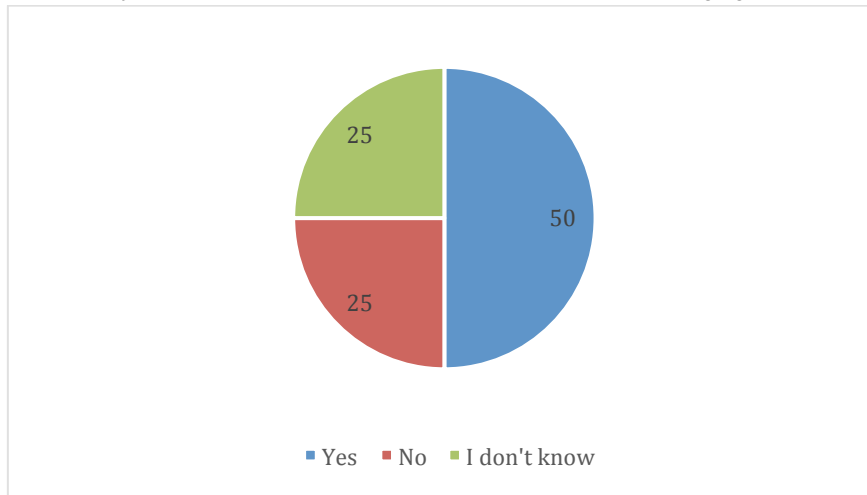
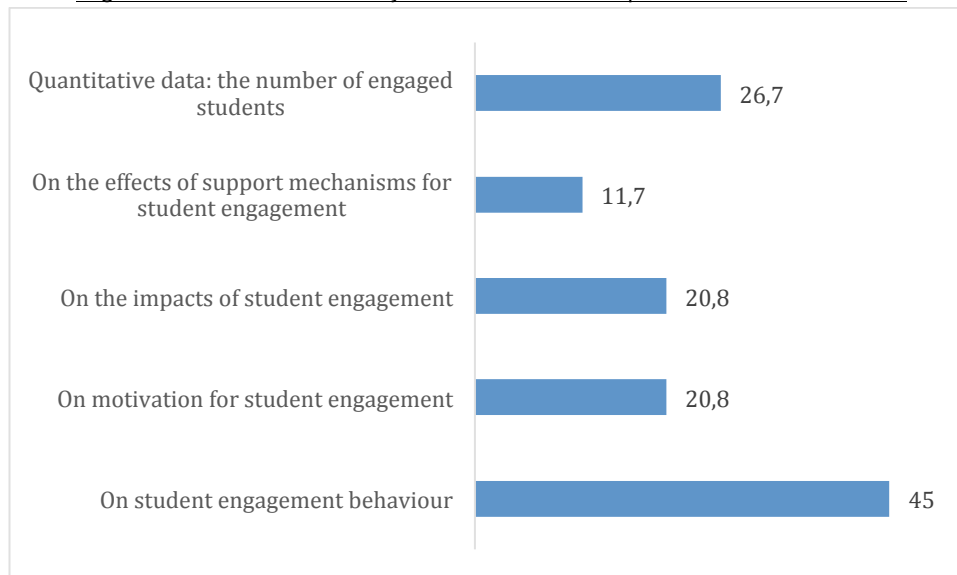


Figure 16. What data do you collect? (Multiple choice) % (N=120)



Modalities of student engagement recognition

Figure 17. How does your institution recognise student engagement? (Multiple choice) %
(N=120)

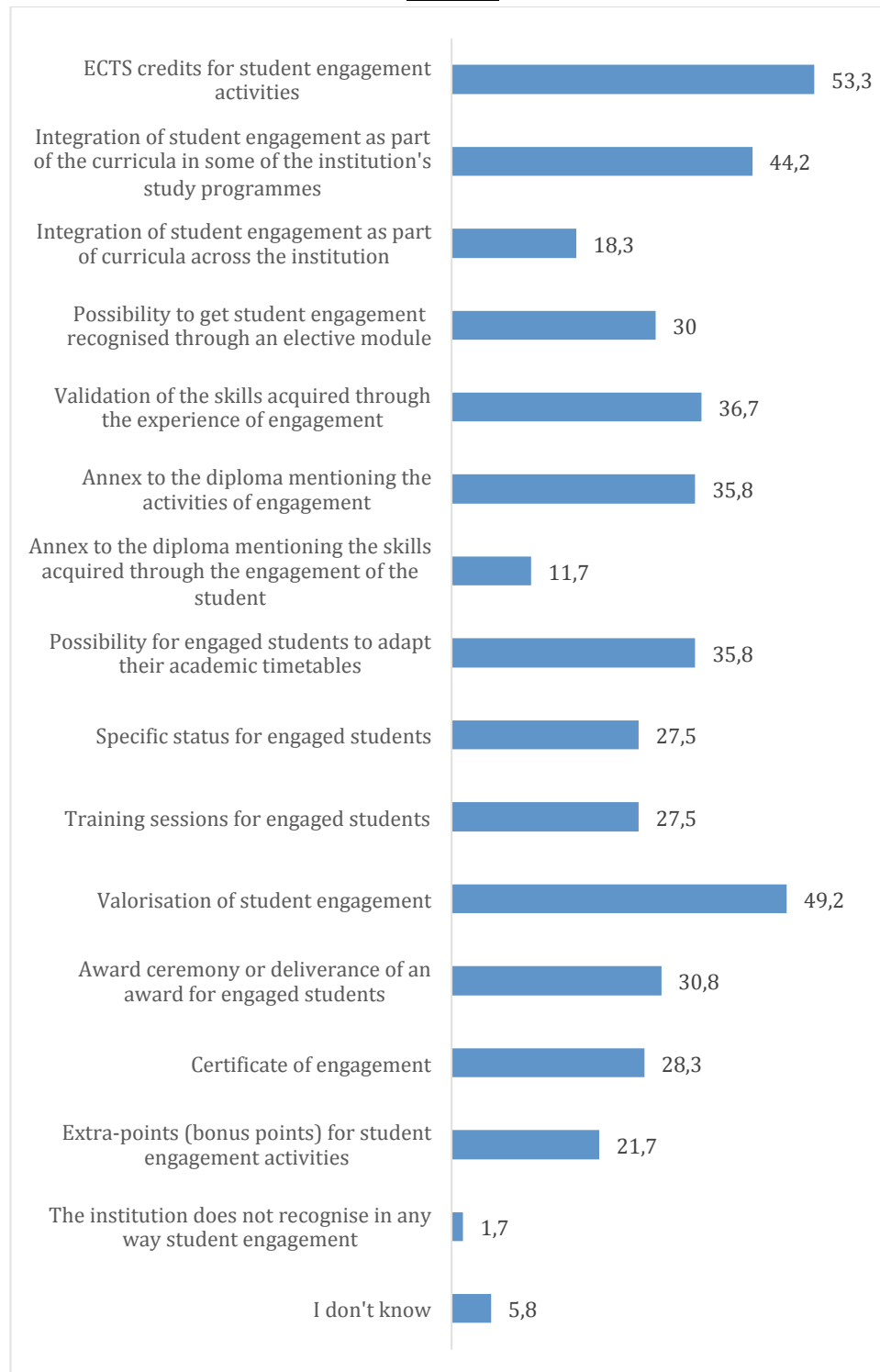


Table 1. Focus on 7 countries: How does your institution recognise student engagement?
(Multiple choice question)

Student engagement	France	Poland	Portugal	Spain	Czech Republic	Austria	Ireland
ECTS credits for student engagement activities	23	6	4	7	2	3	1
Integration of student engagement as part of the curricula in some of the institution's study programmes	17	4	4	4	3	2	1
Integration of student engagement as part of curricula across the institution	7	4	1			1	1
Possibility to get student engagement recognised through an elective module	11	3	4	3		1	2
Validation of the skills acquired through the experience of engagement	14	5	2	3		1	2
Annex to the diploma mentioning the activities of engagement	16	5	6	2	1	3	1
Annex to the diploma mentioning the skills acquired through the engagement of	5		3		1		1

the student							
Possibility for engaged students to adapt their academic timetables	17	6	4	2	3	2	
Specific status for engaged students	10			2			1
Training sessions for engaged students	8	5	3		1		2
Valorisation of student engagement	19	5	3	5	2		2
Award ceremony or deliverance of an award for engaged students	8	4	2	2	3		2
Certificate of engagement	5	5	4	2	1	1	2
Extra-points (bonus points) for student engagement activities	10	8			1		
The institution does not recognize in any way student engagement							
I don't know		1	1	1		1	
Total (by country)	31	12	9	8	7	5	2

Table 2. For each type of measures, please select which type of engagement it can (will) apply to (multiple choice) % (N=120)

	Mandates as student representatives	Mandates outside the institution	Mentoring activities	Political engagement	Engagement into NGOs, non-profit associations, students' organisations & citizenship-related activities	None	I don't know
ECTS credits for student engagement activities	27,5	13,3	30,8	10	31,7	32,5	17,5
Integration of student engagement as part of the curricula in some of the institution's study programmes	22,5	13,3	25	28,3	28,3	26,7	10,8
Integration of student engagement as part of curricula across the institution	10,8	2,5	10,8	1,7	8,3	48,3	33,3
Possibility to get student engagement recognised through an elective module	20,8	13,3	22,5	7,5	22,5	38,3	26,7
Annex to the diploma	24,2	11,7	17,5	9,2	24,2	36,7	25,8
Possibility for engaged students to adapt their academic timetables	25,8	15	15	6,7	17,7	31,7	32,5
Specific status for engaged students	20	5,8	8,3	2,5	9,2	44,2	25,8
Valorisation of student engagement	29,2	16,7	24,2	10	30	28,3	21,7
Award ceremony or deliverance of an award for engaged students	30	11,7	22,5	5	30	29,2	25,8
Certificate of engagement	21,7	11,7	21,7	7,5	19,2	40,8	22,5
Extra benefits	13,3	5,8	14,2	3,3	14,2	41,7	38,3

Figure 18. Does (will) your institution recognise all levels of engagement? (Multiple choice)

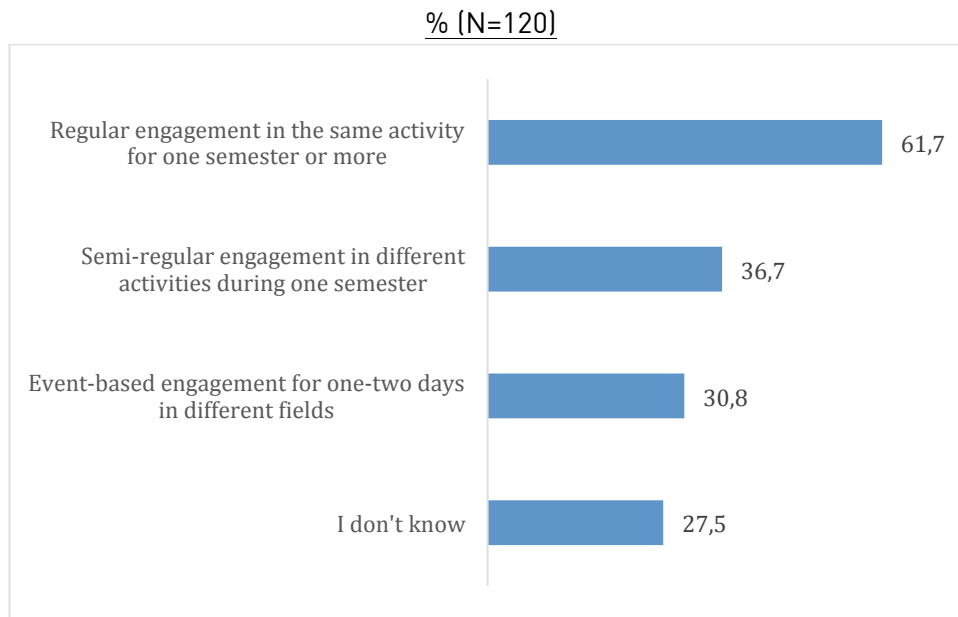


Figure 19. Does (will) your institution recognise competences that are not explicitly mentioned in learning outcomes or other official documents on curriculum expectations through student engagement recognition? % (N=120)

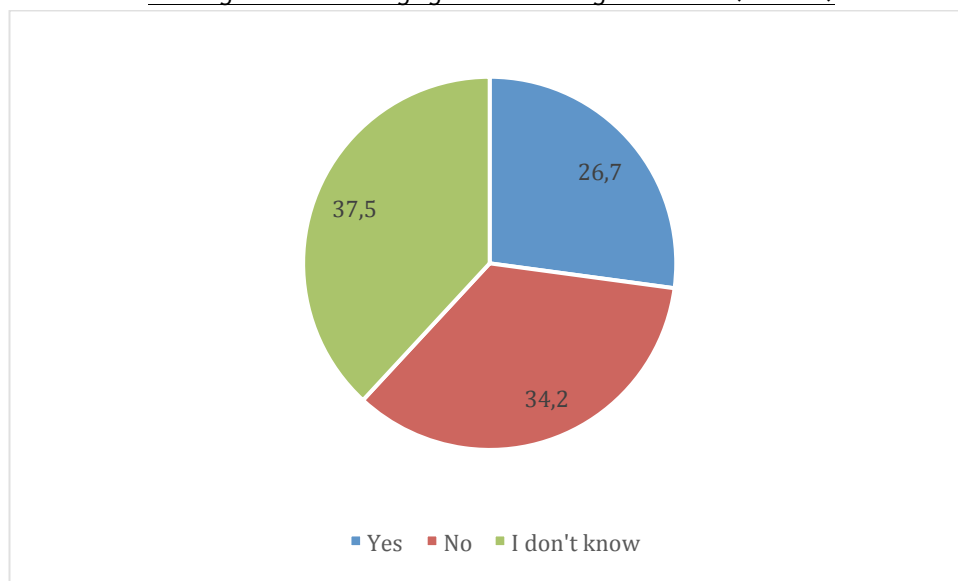


Figure 20. Which students can (will) benefit from engagement recognition? (Multiple choice)

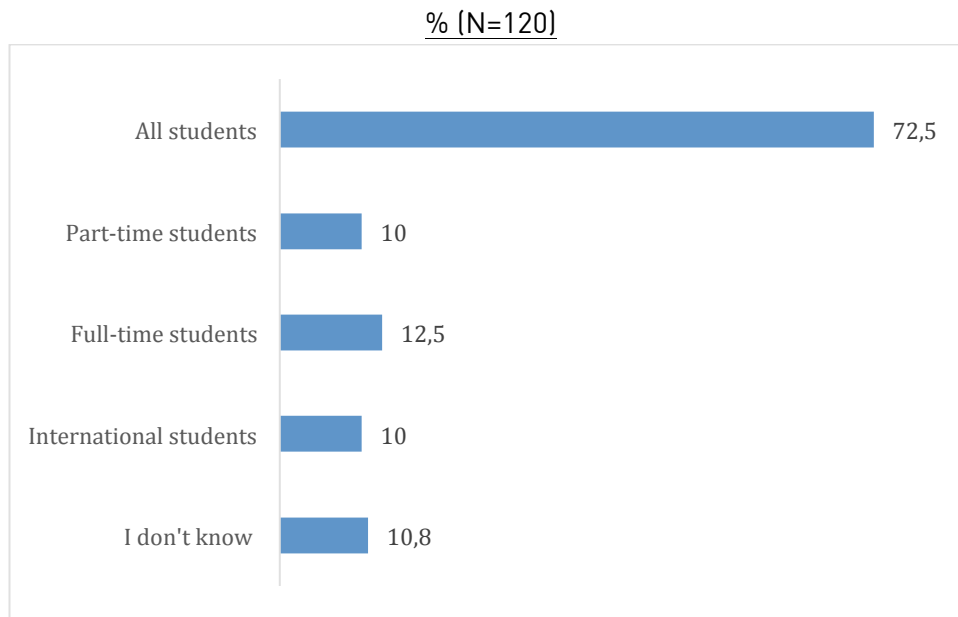


Figure 21. Is there a centralised strategy for the whole institution regarding student engagement recognition? % (N=120)

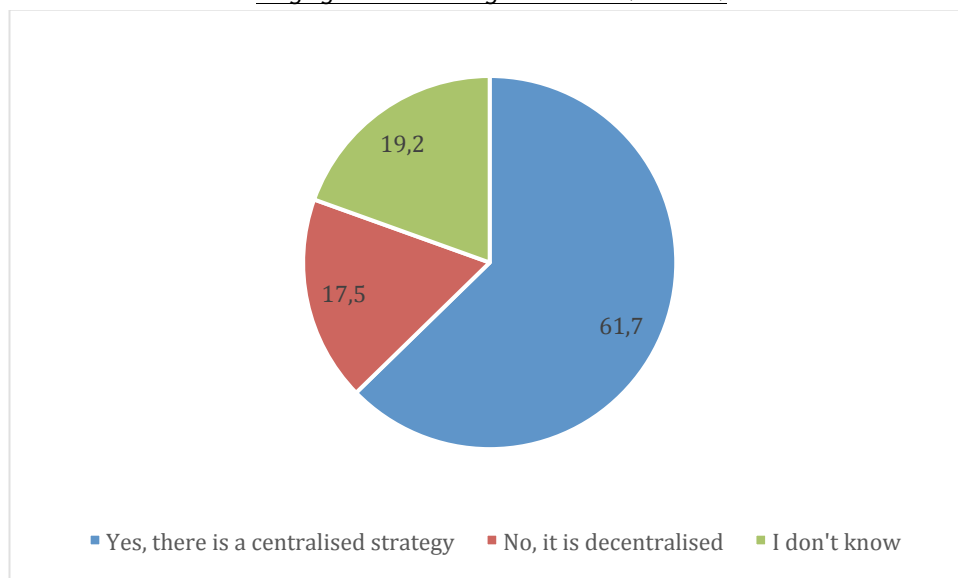


Figure 22. For which cycle of study is it (will it be) possible for students to benefit from this system of recognition? (Multiple choice) % (N=120)

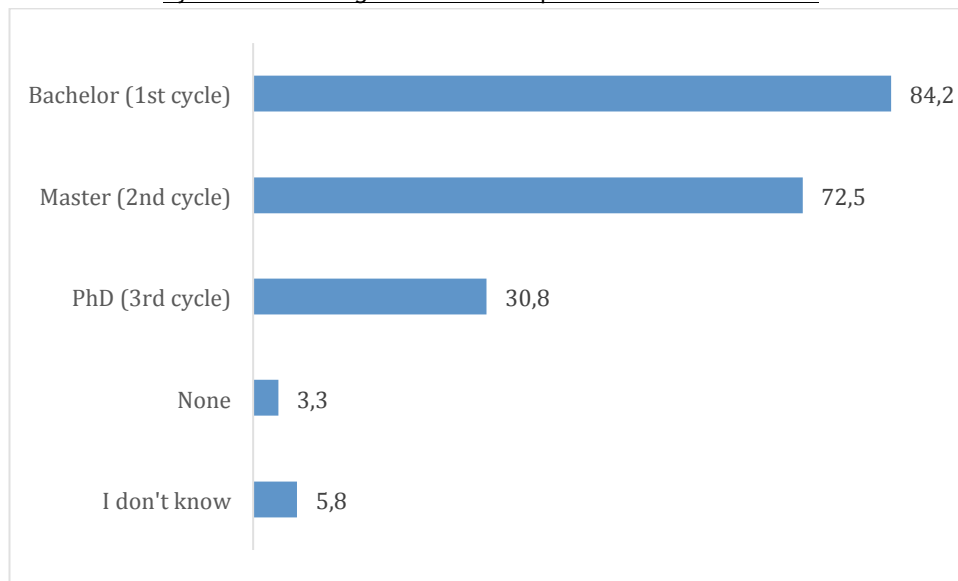
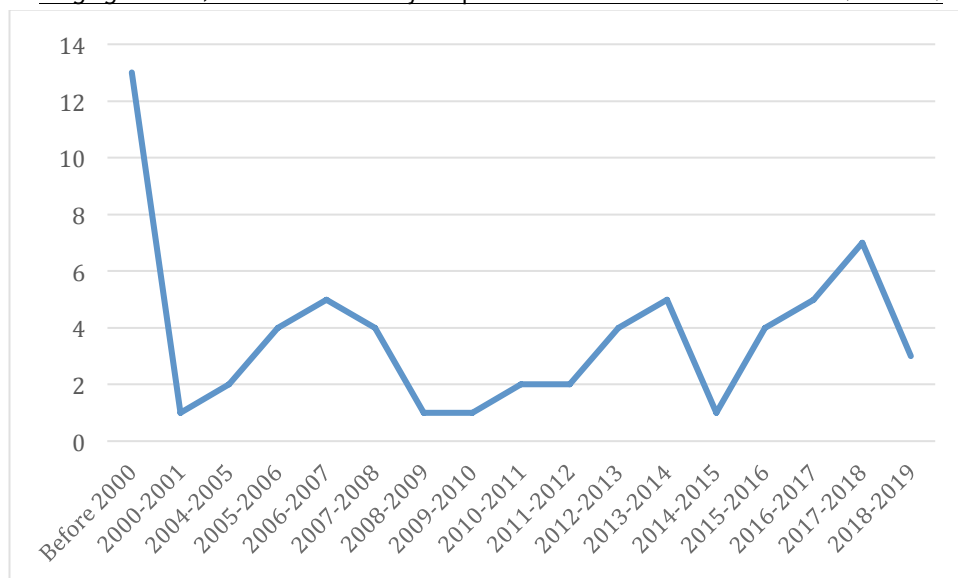


Figure 23. If your institution has already set up recognition measures for student engagement, when were they implemented for the first time? (N=120)



Implementation of student engagement recognition

Figure 24. In your institution, what actions are implemented to make students and administrative and teaching staffs aware of the possibilities of student engagement recognition? (Multiple choice) % (N=120)

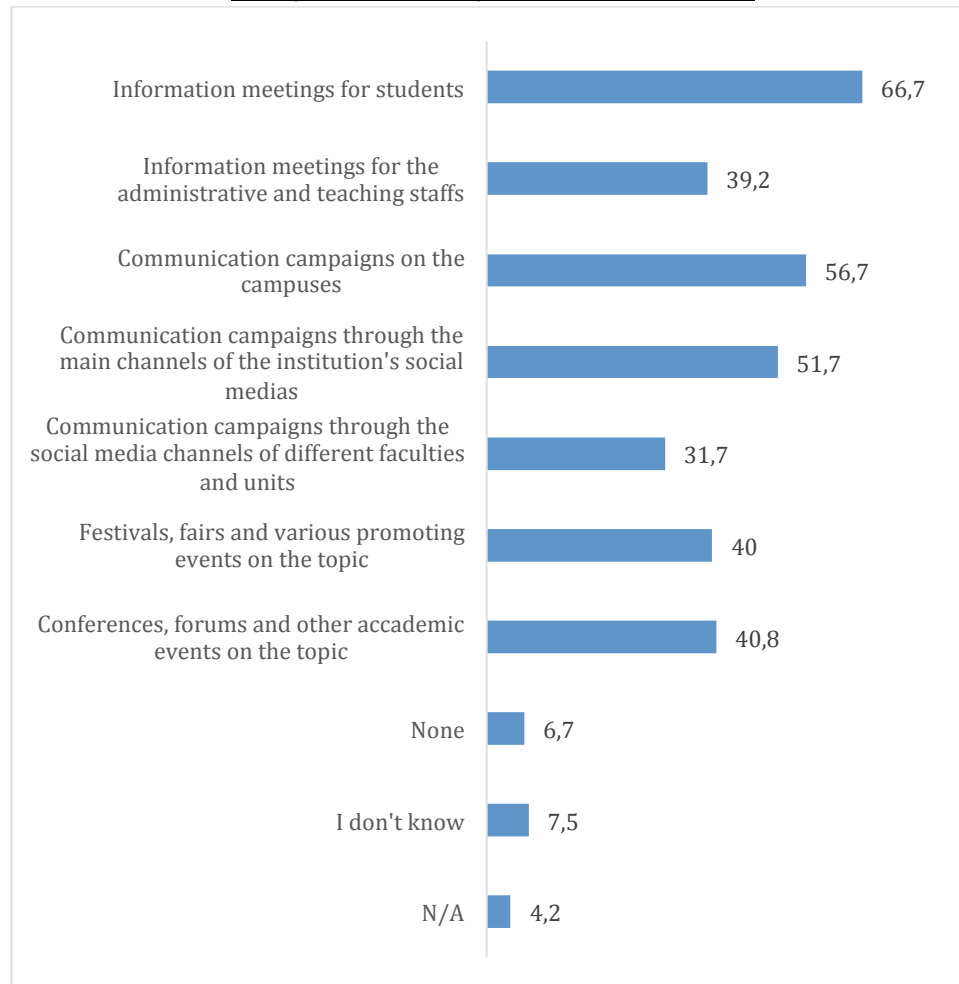


Figure 25. Who initiated the process for the implementation of student engagement recognition? (Multiple choice) % (N=120)

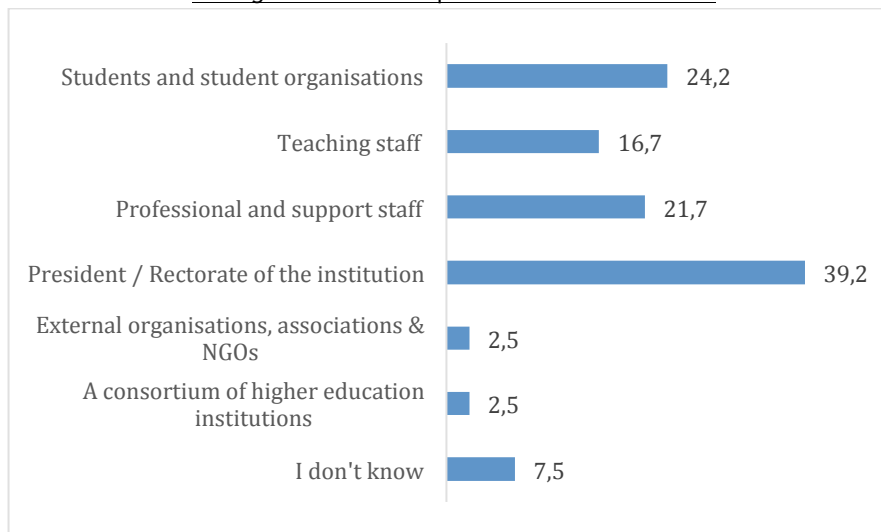
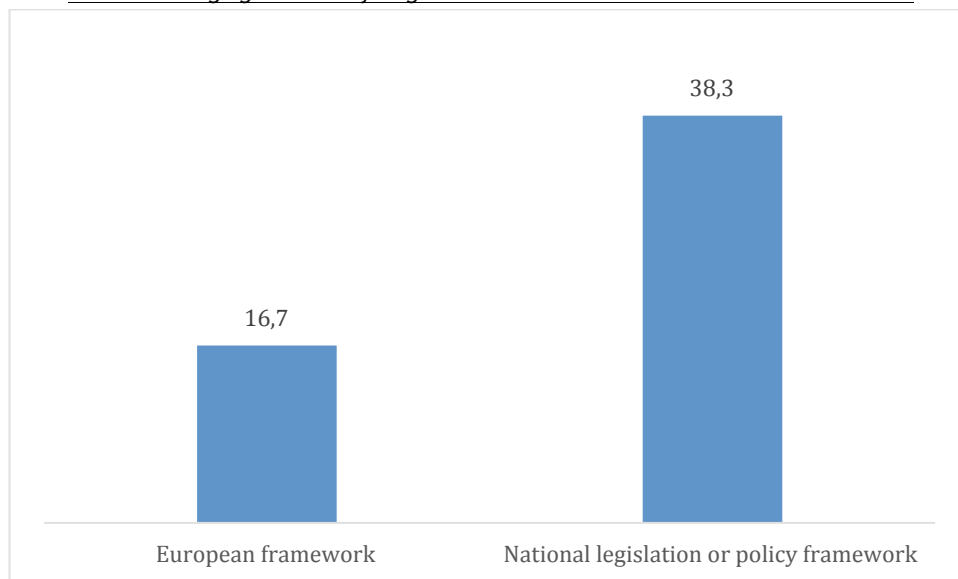


Figure 26. Are you aware of any legislation or policy framework for the recognition of student engagement by higher education institutions? % (N= 120)



This project has been funded with support from the European Commission. This publication reflects the views only of the author, and the Commission cannot be held responsible for any use which may be made of the information contained therein.